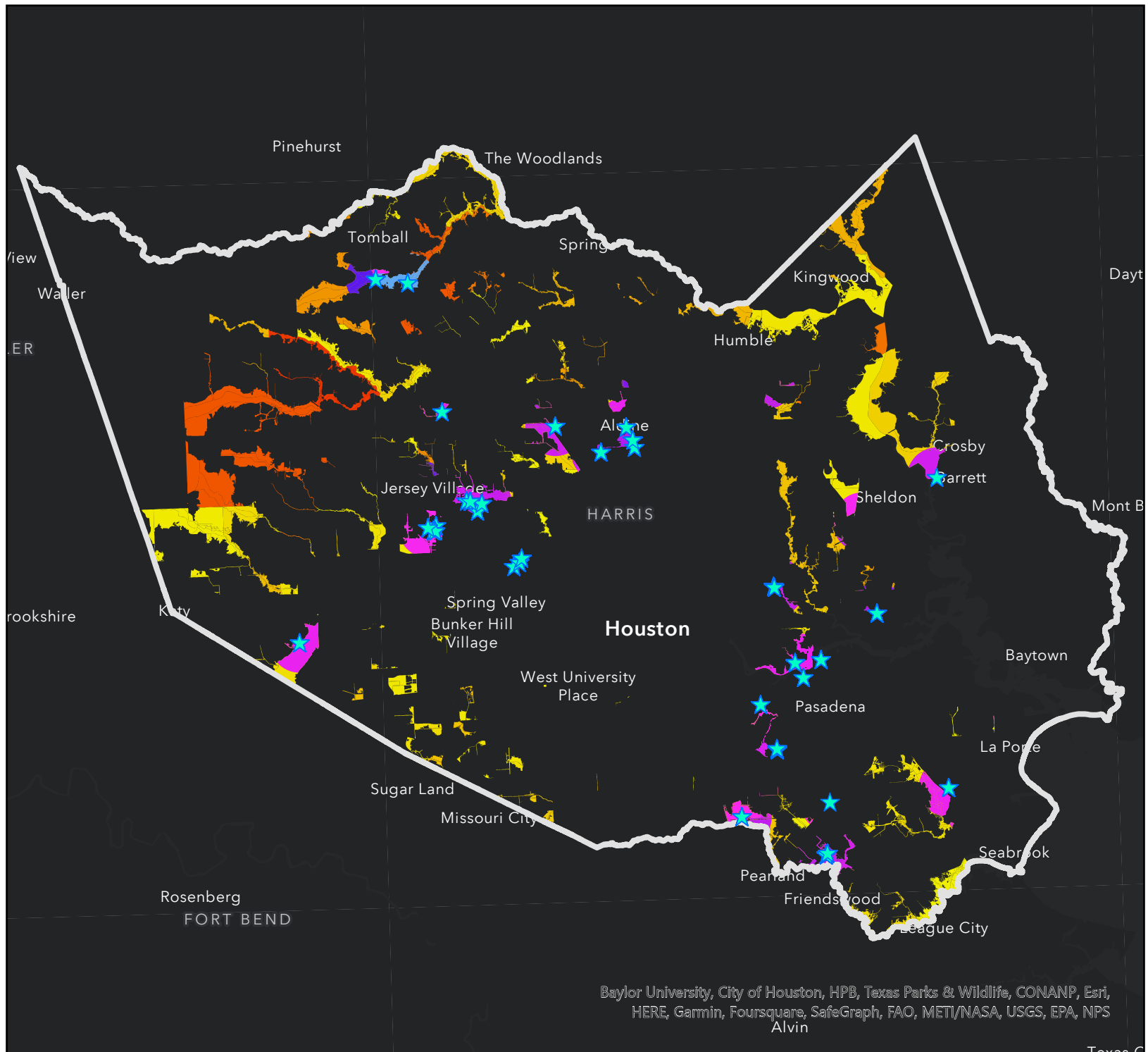
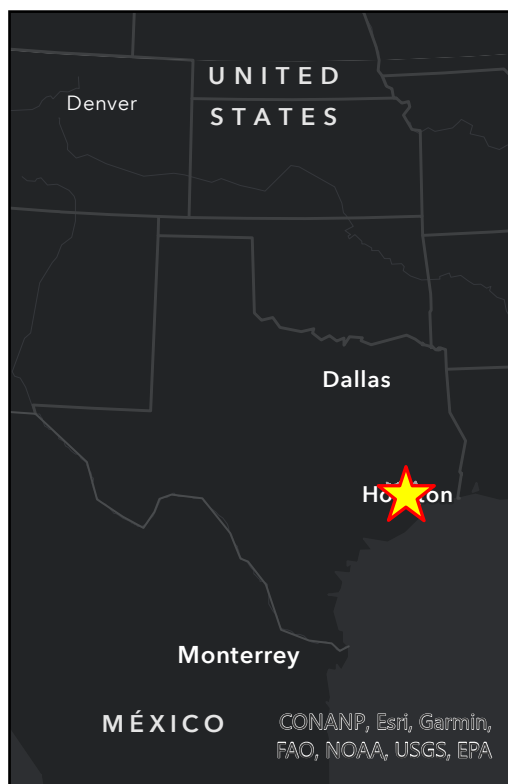
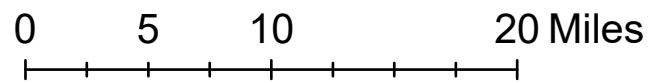




These Are the Populated and Industrial Area Most at Risk of Severe Flooding in Harris County, Texas



Baylor University, City of Houston, HPB, Texas Parks & Wildlife, CONANP, Esri, HERE, Garmin, Foursquare, SafeGraph, FAO, METI/NASA, USGS, EPA, NPS Alvin



- Industrial Complex
- Harris County Boundary
- Harris County
- Industrial Area**
- 34,000
- 9,100
- Population > 9K**
- 9,100
- 41,000

Why is risk changing?

Climate change is driving new weather patterns, rising sea level, and stronger storms. Rising sea level and powerful storms can push more water inland. Rapid urbanization can accelerate the risk and exacerbate flooding.

Motivation: Destruction caused by the storm Harvey

The epicenter of the major damages were the regions of the Greater Houston due to this regions high population and infrastructure growth along with higher rates of impervious surface property.

What are some of the environmentally friendly solutions?

Creating recreational parks on unused flood-prone land can drain water in a natural way and provide recreational space for residents. Permeable pavement, sidewalks and gardens are sustainable drainages.

By Joe Johnson, Source: Harris County Appraisal District, Esri, Texas A&M Forest Service, <https://msc.fema.gov/portal/home>